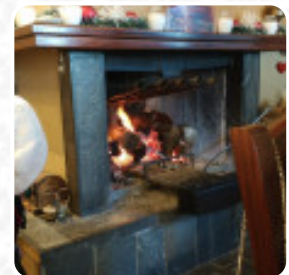
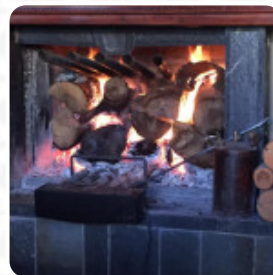
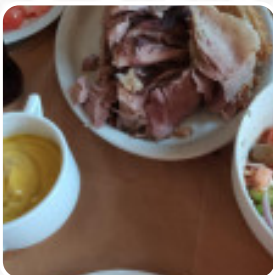


Παραδοσιακή Ταβέρνα Ο Παντελής *Menu*

<https://menulist.menu>
22010 Vytina, Greece, Vytina, Greece

ook.com/%CE%A0%CE%B1%CF%81%CE%B1%CE%B4%CE%BF%CF%83%CE%B9%CE%B1%CE%B1%CF%86%CE%B5%CE%BD%CE%B5%CE%AF%CE%BF-%CF%84%CE%BF-3%CE%B9%CF%80%CE%BF%CF%85%CF%81%CE%AC%CE%B4%CE%B9%CE%BA%CE%BF-F%CF%85-%CE%A0%CE



A complete [menu](#) of Παραδοσιακή Ταβέρνα Ο Παντελής from Vytina covering all 10 meals and drinks can be found here on the card. For [seasonal or weekly deals](#), please get in touch via phone or use the contact details provided on the website. What [User](#) likes about Παραδοσιακή Ταβέρνα Ο Παντελής:

Warm atmosphere with a few tables centered around the marble fireplace. The dishes were all excellent! I highly recommend it! Service: Dine in Meal type: Dinner Price per person: €20–25 [read more](#). When the weather conditions is pleasant you can also have something outside. Παραδοσιακή Ταβέρνα Ο Παντελής from Vytina delivers **tasty, good digestible Mediterranean cuisine** with its typical menus, also, the *Greek specialties* are highly appreciated by the guests of the establishment. Furthermore, you can order fresh prepared grill goods.

Παραδοσιακή Ταβέρνα Ο Παντελής



Soups

SOUP OF THE DAY

Extras

SWEET POTATO

Rice

RISOTTO

Starters

RISOTTO FUNGHI

Tapas

EGGPLANT TAPAS

Turkish specialties

KEBAB

Fleischgerichte vom Grill

SOUVLAKIA

Coffee

CAFÉ

*These types of dishes are
being served*

SOUP

SALAD

Ingredients Used

MEAT

CHEESE

MUSHROOMS

CHICKEN

SAUSAGE

GARLIC

Παραδοσιακή Ταβέρνα Ο Παντελής



Παραδοσιακή Ταβέρνα Ο Παντελής

22010 Vytina, Greece, Vytina,
Greece

Opening Hours:

Monday 12:00-23:30
Tuesday 12:00-23:30
Wednesday 12:00-23:30
Thursday 12:00-23:30
Friday 12:00-23:30
Saturday 12:00-23:30
Sunday 12:00-23:30

Made with menulist.menu

 gallery image

